



Ultra-3660

UV-Vis Spectrophotometer

Ultra-3660 Easy to use & Versatile

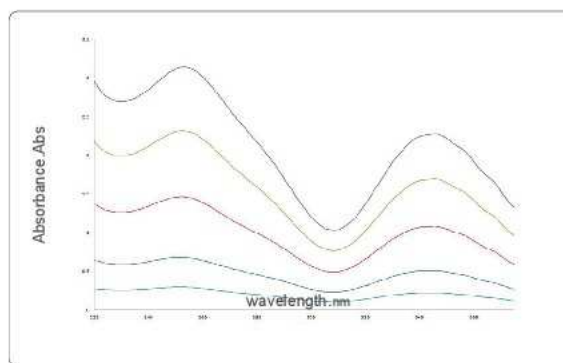
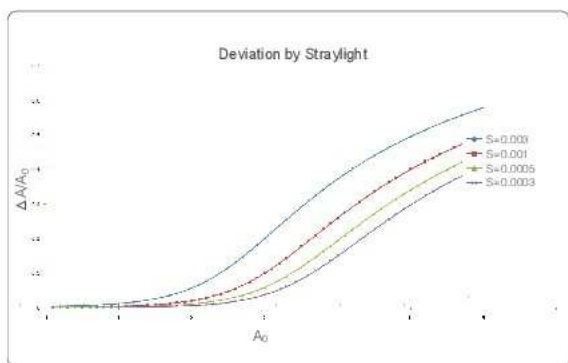


- Light Path** Double-beam and split beam designs
- 0.03 %T** Ultra-low stray light $\leq 0.03\%$
- 0.5 nm** 0.5nm optical resolution with 4 options of spectral bandwidth, 0.5/1/2/4 nm
- Better Usability** Versatile test solutions, with built-in bio-analytical methods
- Friendly Design** 7" TFT color screen WVGA(800X480), water-proofing keyboard design
- Data Processing** Supports storage & printing with USB devices, controllable by UltraUV workstation for extended functions

Ultra-3660 UV-VIS Spectrophotometer could help you to accomplish various analysis by its advanced design and user-friendly interface. With its built-in high resolution color screen and water-proof keyboard, you can easily scan spectrum, monitor kinetic curve, measure unknown sample concentration or even print the report directly via simple operation.

High Cost Performance

- ▶ Ultra-low stray light design for more precise measurement, Stray light $\leq 0.03\%T$ under each bandwidth



Easy to Use

- ▶ Support Flash disk storage and USB print
Connectable to PC via LAN and USB ports
- ▶ 7" TFT color screen WVGA(800X480), graphical interface
Water-proofing design keyboard
Knob button for simple operation



UltraUV Workstation

Friendly Interface

UltraUV workstation adopt intuitive RIBBON style interface design. With the help of build-in measuring mode, UltraUV can easily meet the need from basic measurement to sophisticated research analysis. By dividing the measuring process into “3-Steps”, user could comfortably accomplish the process from method edition, measuring operation and results reporting.

Flexible report design

UltraUV report editor is powerful and flexible, by adopting the principle of “what you see is what you get”, you can input related data in right position based on requirements. The report can be saved as template for future usage.

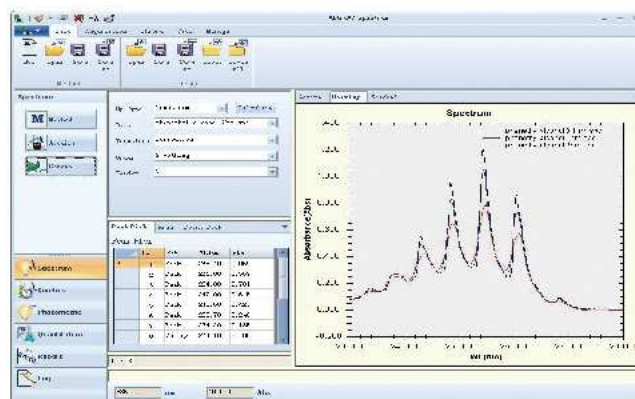


Versatile test solutions

UltraUV includes all your needs for spectrum scanning, kinetic testing, photometric measuring and quantitative analysis. With robust data processing function such as interpolation method, grand average, arithmetic and data set, UltraUV satisfy the most sophisticated application requirements.

GLP/GMP regulations compliance

UltraUV is totally compliance with GLP/GMP regulatory. It ensures the data authenticity & standardability by build-in user account access control, audit trail and encrypted data saving algorithm.



Accessories

- ▶ **Automatic 8-cell holder**
Enable the automatic switching and measuring of eight 10mm square cuvettes
- ▶ **Solid sample holder**
Used for transmittance/absorbance measurement of a solid sheet sample Sample size: 80L x 40W x 20H mm
- ▶ **Absolute Reflectance Attachment**
Used for testing materials with optical surface, or semi-conductive materials. 5° incident angle can reduce the polarized light to the least. Max. sample size: 100L x 160W x 15H mm
- ▶ **Rectangular long-path cell holder**
Holds two long path cells (light path 5-100mm)
- ▶ **Diverse types of cuvettes**
Diverse Quartz and glass cuvettes with different light path and volume

Technical Support and Customer Service



Powerful Lab Test Procedures–Development

RIGOL' s experienced Application Engineer team is dedicated to lab solutions and test procedures development, public hot case study, application optimization, etc. in food safety, pharmacy, biology and environmental monitoring fields. The team also provides the customers with test procedures verification service.



Completed Solutions

RIGOL' s technical support team understands customers needs, provides the customers' with application optimized system configurations, regulations complied test solutions, as well as responsive and quality customer support.



Quality Training Services

RIGOL offers on–site training service, **RIGOL** technical support engineers will help the customers better understand the instruments operations and maintenance, provide the customers with the prompt consulting and support on–site and/or remotely.



Comprehensive Customer Service

RIGOL' s customer–service center is committed to answering customers' service requirement effectively and professionally.

Performance Parameters of Ultra-3660

Model	Ultra-3660
Light Path	Double beam
Spectral Bandwidth	0.5/1/2/4
Wavelength Reproducibility	0.1 nm
Wavelength Accuracy	±0.3 nm
Wavelength Range	190-1100 nm
Noise	±0.00004A
Drift	0.0005Abs/hr
Stray Light	≤ 0.03%T
Spectrum Scanning	Standard
Screen	7" TFT color screen WVGA(800X480)
Direct Printing	Available
USB Storage	Available
Built-in Methods	Available
Workstation	Available